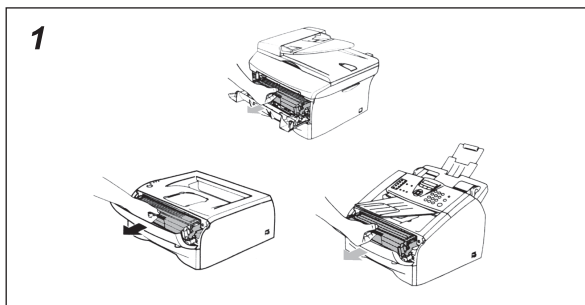
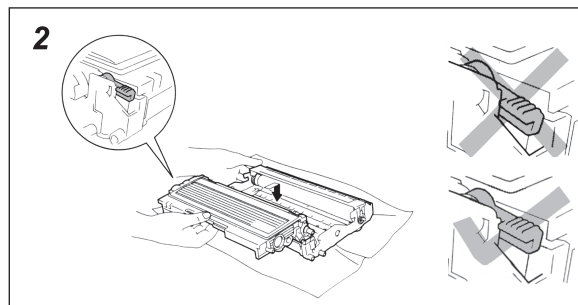


# Installation Manual for Drum Unit

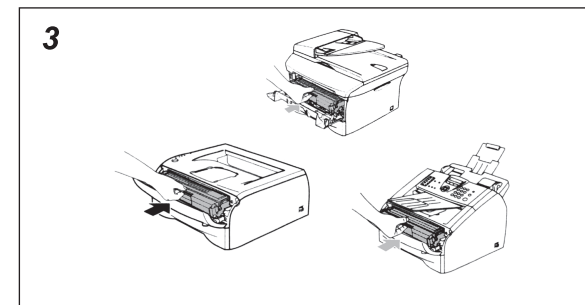
## Compatible with Brother DR-350



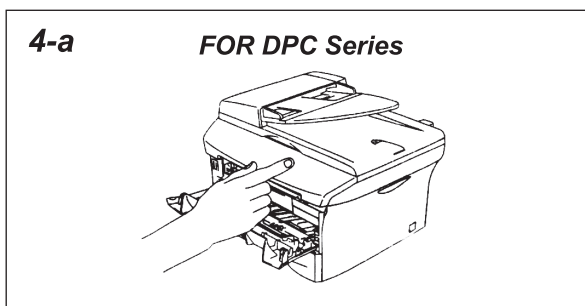
1. Remove the drum unit and toner cartridge assembly from the printer and separate the cartridge from the drum unit according to instructions in the machine manual.



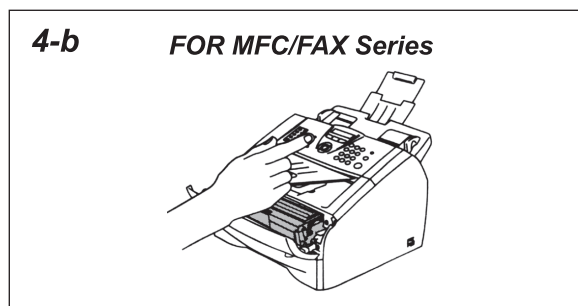
2. Unpack a new drum unit. Install the cartridge into the drum unit properly as shown in the figure above.



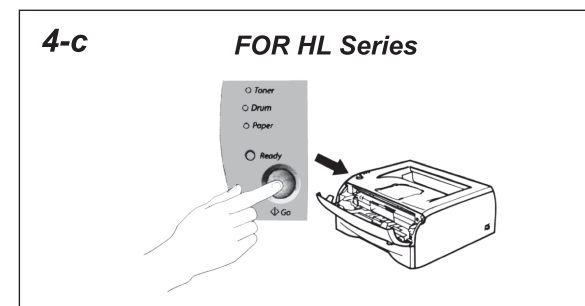
3. Install the drum unit and toner cartridge assembly into the machine. DO NOT close the machine front cover.



4-a. Reset the drum counter: Keep the machine on and press Options on the control panel. When the LCD shows "Replace Drum?", press . Close the front cover after "Accepted" shows.



4-b. Reset the drum counter: Keep the machine on and press Options on the control panel. When the LCD shows "Replace Drum?", press 1. Close the front cover after "Accepted" shows.



4-c. Reset the drum counter: Keep the machine on and press the Go button for at least 4 seconds until all the LEDs are on. Close the front cover after the Drum LED is off.