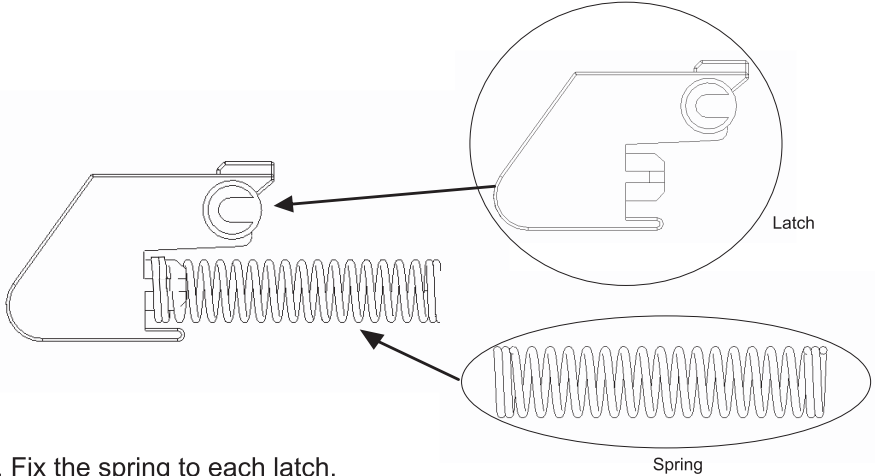
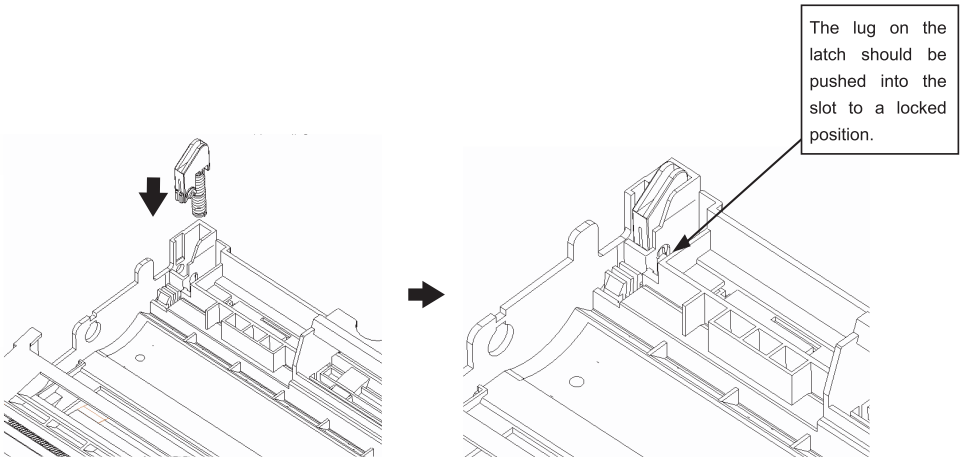


Installation Manual for Latch

2 latches should be installed into the drum unit if you are not using our compatible cartridge for TN-350 (purchased separately), including when using a toner cartridge from the original printer manufacturer or another third party manufacturer.



1. Fix the spring to each latch.



2. Put the 2 latches (with spring fixed) into the slot on each side of the drum unit as indicated.

All brand names & trade marks are the properties of their respective holders and are referred to here for descriptive purposes only. We are not associated with any printer and/or original printing supplies manufacturers.